

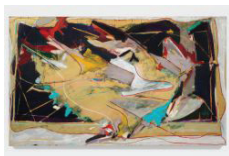
MNUCHIN GALLERY

Mary Lovelace O'Neal Chasing Down the Image

CURATED BY SUKANYA RAJARATNAM

FEBRUARY 6 - MARCH 21, 2020

First Floor - Front Gallery



Mary Lovelace O'Neal
Thelonius Searching Those Familiar Keys
(from the Whales Fucking series)
circa 1980s
mixed media on canvas
81 x 138 inches (205.7 x 350.5 cm)

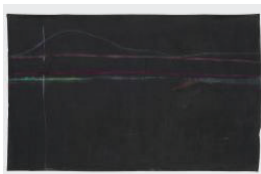
First Floor - Back Gallery



Mary Lovelace O'Neal
She is Living in the Clouds
circa early 2000s
mixed media on canvas
84 x 60 inches (213.4 x 152.4 cm)



Mary Lovelace O'Neal
Running with My Black Panthers and White Doves a.k.a. Running with my Daemons (from the Panthers In My Father's Palace series)
circa 1989-1990
mixed media on canvas
81 x 138 inches (205.7 x 350.5 cm)



Mary Lovelace O'Neal
The Four Cardinal Points Are Three: North and South
circa 1970s
lampblack pigment, masking tape, and pastel on unstretched canvas
85 ¼ x 144 ½ inches (216.5 x 367 cm)



Mary Lovelace O'Neal
Toni's Rose Petals (from the Whales Fucking series)
1981
mixed media on canvas
81 x 138 inches (205.7 x 350.5 cm)



Mary Lovelace O'Neal
Nemesio's Black Showers
circa early 2000s
mixed media on canvas
84 x 60 inches (213.4 x 152.4 cm)

Rotunda



Mary Lovelace O'Neal
Steam Engine
circa 1970s
mixed media on unstretched canvas
83 x 139 ½ inches (210.8 x 354.3 cm)

Second Floor - Front Gallery



Mary Lovelace O'Neal
Forbidden Fruit (from the Lost in the Medina series)
circa 1990s
mixed media on canvas
81 x 138 inches (205.7 x 350.5 cm)



Mary Lovelace O'Neal
Sunrise
circa late 1990s
mixed media on canvas
84 x 60 inches (213.4 x 152.4 cm)



Mary Lovelace O'Neal
Hammam
circa 1984
mixed media on canvas
81 x 138 inches (205.7 x 350.5 cm)



Mary Lovelace O'Neal
Grave Robbers 4
circa 1998
mixed media on canvas
84 x 60 inches (213.4 x 152.4 cm)

Second Floor - Back Gallery



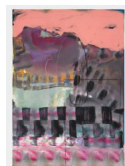
Mary Lovelace O'Neal
Try a Little Tenderness
circa early 1990s
mixed media on canvas
84 x 60 inches (213.4 x 152.4 cm)



Mary Lovelace O'Neal
Pink Self Portrait (from the Two Deserts, Three Winters series)
circa early-mid 1990s
mixed media on canvas
81 x 138 inches (205.7 x 350.5 cm)



Mary Lovelace O'Neal
Set Them Wings on That Table a.k.a. Dem Bones
circa 1998
mixed media on canvas
84 x 60 inches (213.4 x 152.4 cm)



Mary Lovelace O'Neal
There Are No Such Thing As Witches (But They Do Exist) No. 2
circa mid-late 1990s
mixed media on canvas
84 x 60 inches (213.4 x 152.4 cm)



Mary Lovelace O'Neal
Long Ago and Far Away, Age Upon Age, My Tillie
circa late 1990s
mixed media on canvas
84 x 60 inches (213.4 x 152.4 cm)



Mary Lovelace O'Neal
Kurban, A Sweeter Day to Come (from the Panthers in My Father's Palace series)
circa 1989-1990
mixed media on canvas
81 x 138 inches (205.7 x 350.5 cm)



Mary Lovelace O'Neal
If He Whispers to Me, I'll Know He's the One
circa 1999-2000
mixed media on canvas
84 x 60 inches (213.4 x 152.4 cm)